

M&J VALVE

SPX Process Equipment

SWING CHECK VALVE



An Inexpensive Low Maintenance Back Flow Prevention Solution

In cross country pipelines, at river crossings, subsea tie-ins and on offshore platforms, the prevention of back flow protects your equipment, the environment and saves lives. These are only a few of the applications where the M&J swing check valve prevents back flow. Its proven, reliable design meets the demands of a wide range of both surface and subsea flow control applications in oil and gas transmission, distributor, production, and a wide range of industrial services.

Simple – Cost Effective

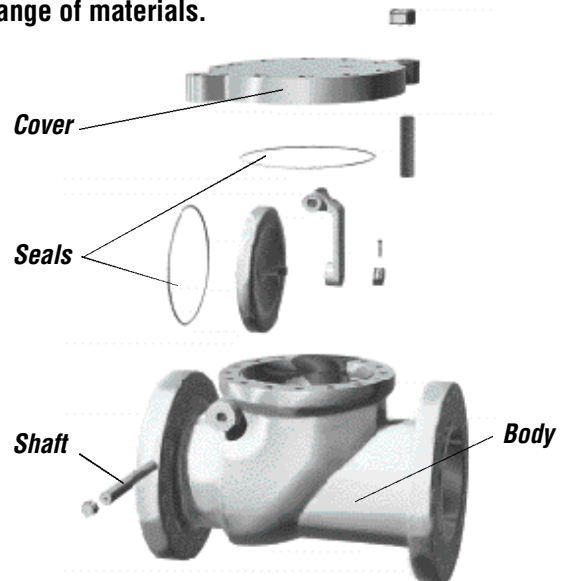
The M&J swing check valve's continuous operation ensures reliable protection. Without the need for an outside power source, the M&J swing check valve is an inexpensive, low maintenance solution to prevent back flow.

For Standard or Critical Applications

M&J offers swing check valves with a wide range of convenience, performance and safety options. Full opening designs minimize pressure drop across the valve and permit passage of intelligent pigs, scraper pigs and spheres. For high temperature service metal to metal seat seals and ring joint cover seals are standard. For turbulent flow conditions, M&J swing check valves are offered with slam retarders. For subsea, custom engineered swing check valves are built to meet the most demanding customer specifications, testing and operational requirements. In short – if there is a need for a positive shut off of back flow, M&J can engineer and manufacture a swing check valve solution to meet the customers requirements.

Wide Range of Materials and Size Availability

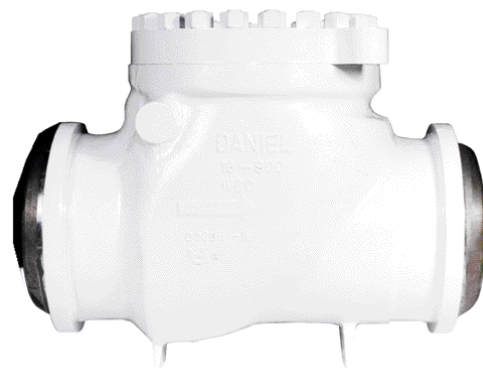
M&J manufactures swing check valves in a wide range of materials.



In addition to carbon steel, M&J Valve can fulfill alloy and stainless steel requirements. Engineering assistance in recommending materials for special service requirements is also available.



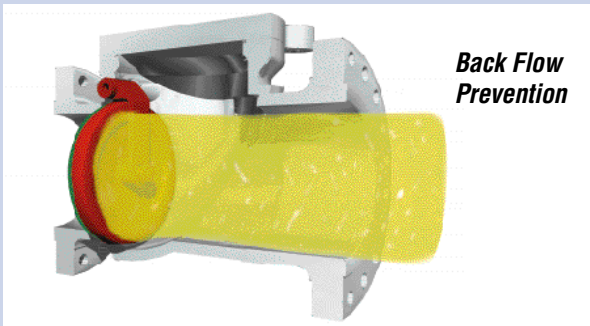
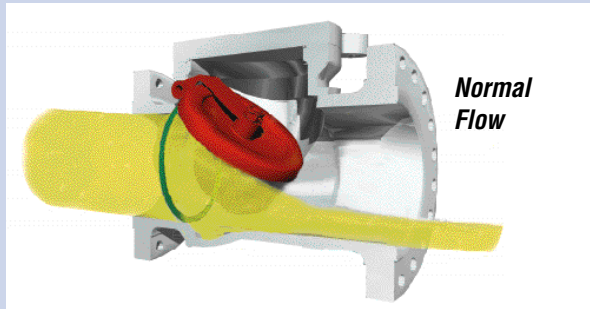
6" ANSI Class 600



Standard M&J swing check valves are available in sizes 2" thru 36"; ANSI class 150 thru 1500 are available in flanged and/or weld end configuration.

Positive Back Flow Prevention

The clapper is the only moving part in a M&J swing check valve. During normal flow the clapper swings up allowing free forward flow. When pressure is lost across the valve, the clapper falls and creates a barrier to backflow in a fraction of a second. The higher the backflow pressure the tighter the seal.



Conformance To The Highest Standards

M&J Valve designs, manufactures and tests their swing check valves in accordance to API-Q1 and ISO-9001.

M&J swing check valves can be manufactured to meet one or more of the following standards.

- ANSI B 16.5 - flanges and flanged fittings
- ANSI B 16.34 - steel valve specifications
- API - 6D - pipeline valve specifications
- ASME Section VIII - boiler and pressure vessels
- DOT Parts - 191, 192 and 95 Title 49 - pipeline standards
- NACE MR-01-75 (Latest edition) - corrosive materials standard

Tested For Safety and Performance

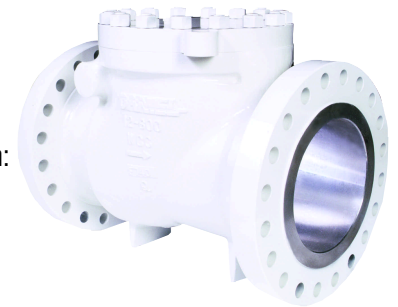
M&J Valve subjects each swing check valve to shell and seat tests in accordance with applicable standards. Customer specified testing and non-destructive exams are available on request.

Performance Options Available

M&J pipeline check valves with removable seats are available upon request. Most of these requests are for applications that permit seat monitoring or where a defined maintenance program or extremely corrosive or erosive service is in place.

M&J swing check valves may include one or more of these options:

- Accessory mounting
- Body Drain
- Extended shaft with:
 - Counterweight
 - Position indicator
 - Proximity switch
 - Slam retarder
 - Lock open
- Emergency shutdown systems:
 - Pressure actuated
 - Solenoid actuated
 - Temperature actuated



12" ANSI Class 600

The M&J Commitment To You

M&J Valve is committed to a comprehensive quality system incorporating strict control over design, manufacture and supply of products for each of our customers.

Quality system implementation is the key to providing products that comply with your specific requirements.

When your application demands a versatile, low maintenance, quality valve which meets your standards and complies with safety and manufacturing requirements,

contact M&J Valve.



10" ANSI Class 600



For more information about our worldwide locations, approvals and certifications, and local representatives, please visit our web site.

Web Site: www.spxprocessequipment.com

E-Mail: mandjvalve@processequipment.spx.com

SPX Process Equipment

Your local contact

19191 Hempstead Highway, Houston, TX 77065 Telephone: (281) 469-0550, Outside Texas (800) 231-3690 • Fax: (281) 894-1332

SPX Process Equipment reserves the right to incorporate our latest design and material changes without notice or obligation. Design features, materials of construction and dimensional data, as described in this bulletin, are provided for your information only and should not be relied upon unless confirmed in writing. Certified drawings are available upon request.

Issued: 12/05 MJ-1820

© 2005 SPX Process Equipment